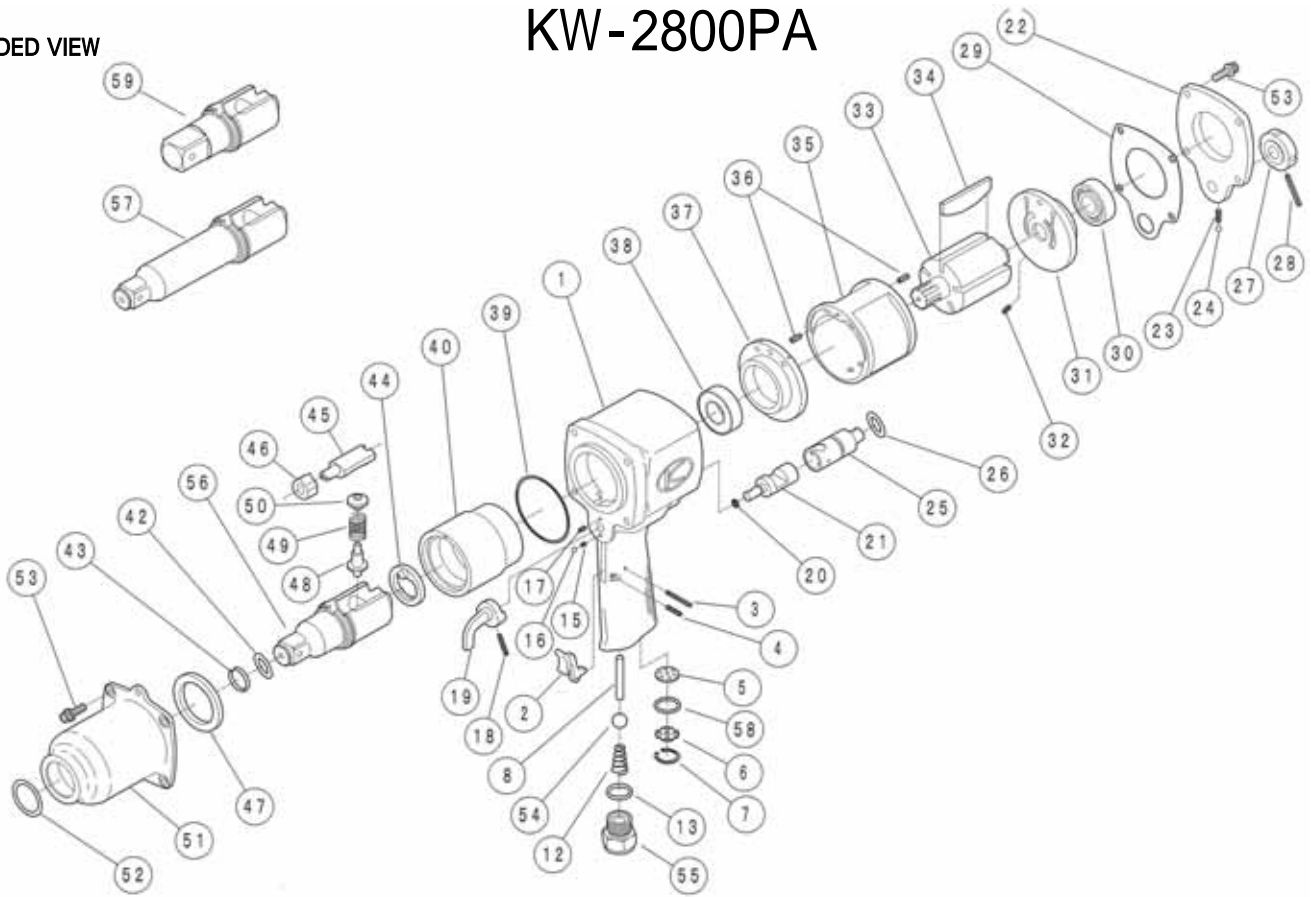


EXPLODED VIEW

KW-2800PA



| REF.NO. | PART NO. | PART NAME | Q'TY | REF.NO. | PART NO. | PART NAME | Q'TY |
|---------|------------|-----------------------|------|---------|-------------|------------------------------|------|
| 1 | 0528081BAH | MOTOR CASE C.P. | 1 | 38 | Z0016005ZZ | BALL BEARING | 1 |
| 2 | 0714P12 | THROTTLE LEVER | 1 | 39 | Z041S65 | O-RING | 1 |
| 3 | Z0563X28 | PIN | 1 | 40 | 0528026BAH | HAMMER WHEEL | 1 |
| 4 | Z0563X16 | PIN | 1 | 42 | Z040P14 | O-RING | 1 |
| 5 | 0423061A | MUFFLER | 1 | 43 | 0120128 | RETAINER RING | 1 |
| 6 | 0423062 | MUFFLER STOPPER | 1 | 44 | 0528050BAH | RETAINER | 1 |
| 7 | Z03020 | RETAINER RING | 1 | 45 | 0525028 | ANVIL PIECE | 1 |
| 8 | 0528013 | THROTTLE VALVE PIN | 1 | 46 | 0525027 | CAM | 1 |
| 12 | 0438342 | THROTTLE VALVE SPRING | 1 | 47 | 0525029 | BUSHING | 1 |
| 13 | Z040P18 | O-RING | 1 | 48 | 0525051B | PLUNGER A | 1 |
| 15 | 0114194 | KNOCK SPRING | 1 | 49 | 0525053 | SPRING | 1 |
| 16 | Z0104D | STEEL BALL | 1 | 50 | 0525052B | PLUNGER B | 1 |
| 17 | Z0564X8 | PIN | 1 | 51 | 0528082 | CLUTCH CASE C.P. | 1 |
| 18 | Z0563X22 | PIN | 1 | 52 | Z040P34 | O-RING | 1 |
| 19 | 0525016B | REVERSE LEVER | 1 | 53 | Z0666X18A | BOLT | 8 |
| 20 | Z041S6 | O-RING | 1 | 54 | Z0111/2D | THROTTLE VALVE BALL | 1 |
| 21 | 0528015 | REVERSE VALVE | 1 | 55 | 0132311 | INLET BUSHING | 1 |
| 22 | 0528088 | CASE COVER C.P. | 1 | 56 | 05280843BAH | ANVIL 3/4"SQ C.P | 1 |
| 23 | 0114192 | KNOCK SPRING | 1 | 58 | Z041S18 | O-RING | 1 |
| 24 | Z0104D | STEEL BALL | 1 | 59 | 05280301BAH | 1"SQ.ANVIL(No Retainer Type) | 1 |
| 25 | 0528017 | REGULATOR VALVE | 1 | | | | |
| 26 | Z040P14 | O-RING | 1 | | | | |
| 27 | 0438318 | REGULATOR VALVE KNOB | 1 | | | | |
| 28 | Z0563X28 | PIN | 1 | | | | |
| 29 | 0528006 | MOTOR GASKET | 1 | | | | |
| 30 | Z0016203 | REAR BEARING | 1 | | | | |
| 31 | 0528024 | REAR END PLATE | 1 | | | | |
| 32 | Z0563X8 | SPRING PIN | 1 | | | | |
| 33 | 0528021BAH | ROTOR | 1 | | | | |
| 34 | 0538022 | ROTOR BLADE | 5 | | | | |
| 35 | 0120304 | CYLINDER | 1 | | | | |
| 36 | Z0564X10 | SPRING PIN | 2 | | | | |
| 37 | 0528023BAH | FRONT END PLATE | 1 | | | | |



KUKEN CO., LTD.

3-6-15 Nonoue, Habikino-shi, Osaka 583-0871, Japan

Tel : +81-72-953-3346 Fax : +81-72-953-0605

2010/12/06